

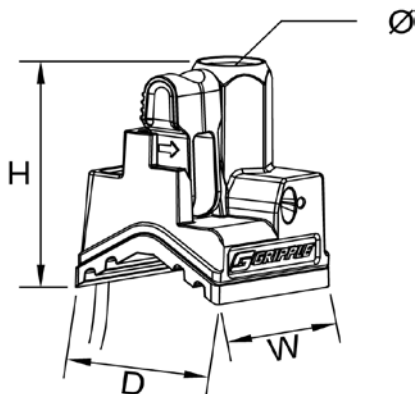
Universal Clamp för upphängning av spirorör

PRODUCT INFORMATION

- Universell - för spirorör från 80 to 600 mm diameter
- Upp till 6 gånger snabbare än traditionella metoder
- Inga verktyg behövs
- Passar M8 & M10
- Akustisk reduktion upp till 10,2 dba
- Viktklassad till 45 kg med 5:1 säkerhet
- Arbetstemperatur: -40°C till +110°
- Minskar vibrationer



GRIPPLE CLAMP



	H (mm)	D (mm)	W (mm)
GC2	39	29.5	29

WIRE ROPE SPECIFICATION

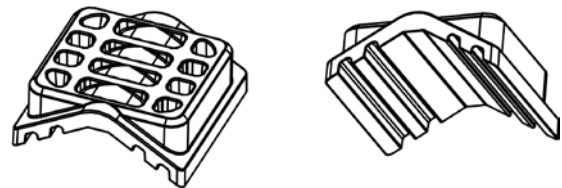
- 2 mm diameter
- 0.80, 1.5 & 2.5 m length
- 7x7 wire rope construction
- 1770 N/mm² tensile strength
- Conforms to EN 123485 standard

REFERENCE

GC2-PAD-M-1.5 M with pad and 1.5 m wire rope

INSULATED PAD SPECIFICATION

- Material: TPE Black Compound
- Type 108004
- Working temperature: -40°C to +110°C
- Melt temperature: +180°C
- Shore hardness A: 60 - 68



SPIRAL DUCT INFORMATION CHART

Ø (mm)	Circumference (m)	Thickness (mm)	Weight (kg / m)	Weight (kg / 3 m)
80	0.251	0.5	1.14	3.42
100	0.314	0.5	1.43	4.29
125	0.393	0.5	1.78	5.34
150	0.471	0.5	2.14	6.42
200	0.629	0.6	3.42	10.26
250	0.786	0.6	4.27	12.81
300	0.943	0.6	5.13	15.39
355	1.116	0.8	8.08	24.24
400	1.257	0.8	9.10	27.30
450	1.414	0.8	10.24	30.72
500	1.571	0.8	11.37	34.11
560	1.760	0.8	12.74	38.22
630	1.980	0.8	14.34	43.02

This table is an extract from Lindab® product guide

Recomendation :
Ø 80 to Ø 315 mm : GC2-PAD-M-1.5 M